

perf. fold

NIFES Bespoke Services

NIFES provide tailor-made services and training courses for clients. These include:

- Bespoke Boiler House Management courses delivered at clients' sites and tailored to specific plant and training needs of delegates.
- Development of Boiler Plant Operating Procedures in accordance with HSE Guidance Note PM5 and SAFed Guidelines for the Operation of Steam Boilers PSG2.
- Surveys of boiler plant and steam/hot water distribution systems to identify energy saving measures and highlight improved practice in boiler plant operation.
- Boiler plant decentralisation feasibility studies.
- Waste heat recovery feasibility.
- Studies on use of biomass and other alternative fuel options.
- Integration of Combined Heat and Power (CHP) plant.
- Safe systems of work.
- Environment emissions measurements and reports.
- Engineering design and project management of new boilers and ancillary plant.

Delegates' Comments

"Very good delivery from a very knowledgeable tutor. The course was interesting and most of all, informative."
Elyo UK, Ambrosia Plant

"Well worth doing the course and will recommend it to others"
Boston Scientific, Galway, Ireland

"Very good and instructive course"
Emcor Facilities Services, AWE Burghfield

Gail Balfour
NIFES Consulting Group
Spinney Hill
Landmere Lane
Ruddington
Nottingham NG11 6ND

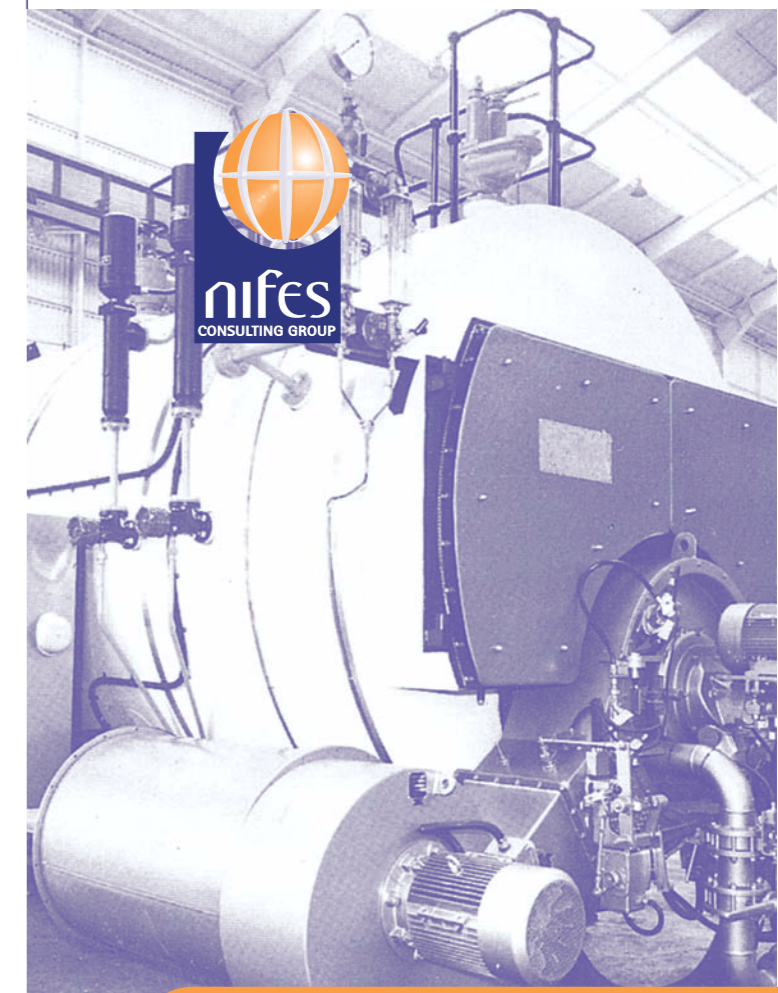
Affix
Stamp

perf. fold

Recent Clients

- Aberdeen University
- BNFL
- BPB Paperboard
- British Petroleum
- Carbon Trust
- Corus
- CP Pharmaceuticals
- De Beers
- Defence Estates
- Eden Vale
- Ford Motor Company
- Glanbia Cheese
- Interbrew
- Knorr Bestfoods
- London Clinic
- National Health Service
- Nestlé
- Parliamentary Works
- Pringles
- Proctor and Gamble
- Rhone Poulenc
- Rover
- Scottish Courage Brewing
- SP Tyres
- Spirax Sarco
- Sustainable Energy Ireland
- Tate & Lyle
- Toyota
- Tullis Russell
- UKAEA
- Van Den Bergh Foods
- Vauxhall
- Volvo
- Wyeth Biopharmaceutical


NIFES Consulting Group
Spinney Hill, Landmere Lane
Ruddington, Nottingham, NG11 6ND
Telephone 0115 984 4944
Facsimile 0115 984 4933
e-mail: nottingham@nifes.co.uk



Boiler House Management

A two day open course on managing and operating commercial and industrial boiler plant

- at optimum efficiency
- safely
- with minimum environmental impact

Boiler House Management

Course Aim

To equip delegates to manage and operate commercial and industrial boiler plant at optimum efficiency, safely and with minimum environmental impact.

Who should attend?

Plant operators, Supervisors and Managers who have responsibility for the safe and efficient operation of boiler plant.

Plant Covered

- Pressurised/High Temperature Hot Water Boilers and Steam Boilers
- Shell Boilers & Water Tube Boilers
- Waste Heat Boilers
- Combined Heat and Power (CHP) Plant
- Waste Heat Boilers
- Process and Space Heating Systems

Course Content

- **Boiler Plant Safety**
Potential problems and consequences.
- **Types of Plant and Ancillary Equipment**
Shell, water-tube, steam generators, superheaters, economisers.
- **Boiler Protective Devices and Fittings**
Functions and safe operating limits.
Testing of fittings and controls.
- **Industrial Fuels**
Gas oil, solid fuel. Composition, properties, characteristics. Fuel handling systems.
- **Combustion Air**
Properties, primary, secondary, excess air, ventilation.
- **Products of Combustion**
O₂, CO₂, CO, SO_x, NO_x, Smoke, Grit and Dust.
- **Corrosion**
Sulphur corrosion. Causes and Prevention.
- **Draught**
Forced, induced, natural.

Course Details

- **Heat Transfer**
Conduction, Convection, Radiation.
- **Environmental Issues**
Clean Air Act, EPA, IPPC, Authorisation.
- **Firing Equipment**
Gas, oil, solid fuel systems.
- **Water Treatment**
External and Internal treatment. Physical and chemical methods.
- **Steam and Hot Water Generation**
Temperature, pressure, heat content (enthalpy), saturated and superheated steam, dryness fraction, flash recovery, water hammer, priming.
- **Efficiency**
Combustion analysis, heat recovery opportunities, insulation.
- **Safe Systems of Work**
HSE Guidance Notes PM5 and PM60.
SAFed (AOTC) Guidelines for the Operation of Steam Boilers.

Tailoring

The course content is subject to modification. Registered delegates will be sent a brief questionnaire requesting details of their plant. These details will be taken into account by the course tutor who will vary the course to meet as many interest areas as possible.

Documentation

The course is fully documented. Each delegate will receive a copy of "The Boiler Operators Handbook" prepared by the National Industrial Fuel Efficiency Service (NIFES), together with course support documentation and a certificate of attendance.

Venue

Open courses are held at the Westminster Hotel, Nottingham.

Duration

Each course lasts 2 days.

Course Tutors

The courses will be delivered by one of the following experienced NIFES' training consultants.

Mr. Stuart McMaster CEng MEI

Stuart joined NIFES in 1988 after 20 years working in production and engineering functions in industry. He has extensive practical experience of site utility generation and distribution systems. Stuart joined NIFES' Training Division as a Senior Training Consultant in 1991 and has delivered boiler courses throughout the UK.

Mr. Mike Cogan BEng CEng MEI

Mike has had 25 years experience in technical education and training in the UK and overseas. He has extensive experience of boilers, compressors and turbines and has led seminars for multi-national companies to improve safety and efficiency in plant operation.

Accommodation

Delegates are responsible for making their own overnight hotel arrangements. A list of local hotels, indicating location and costs will be sent to those registering.

Registration

- To book your place please phone 0115 9844 944 and ask for Training Division.
- Alternatively complete the detachable reply slip and we will send further details and a registration form.
- Course fee of £550 + VAT includes, tuition, "The Boiler Operators Handbook", course support documentation, buffet lunches and refreshments.
- Early registration is advised as delegate numbers are restricted to 10 per course.
- The course begins at 9.00a.m. on day 1 and ends at 4.30p.m. on day 2.

perf. fold

perf. fold

Boiler House Management Reply Slip

I'd like to attend on the following date: 8th and 9th March 2005 8th and 9th November 2005

The course fee is £550 + VAT. Please send me further details and a registration form

Name Position

Organisation

Address

.....

..... Postcode.....

Telephone Fax

